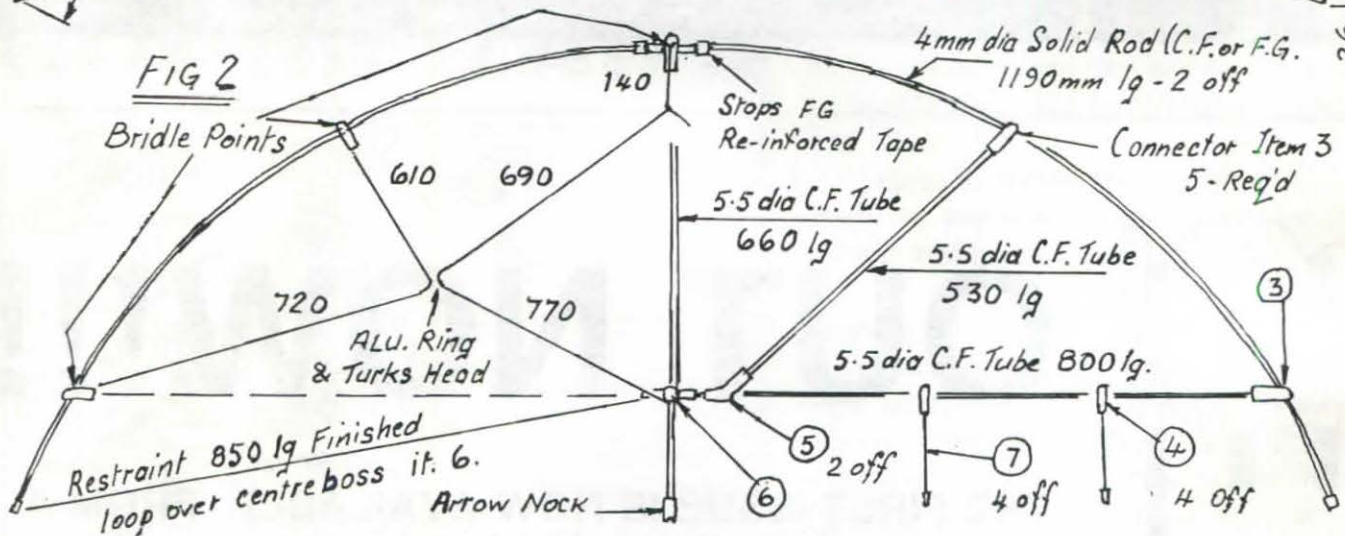
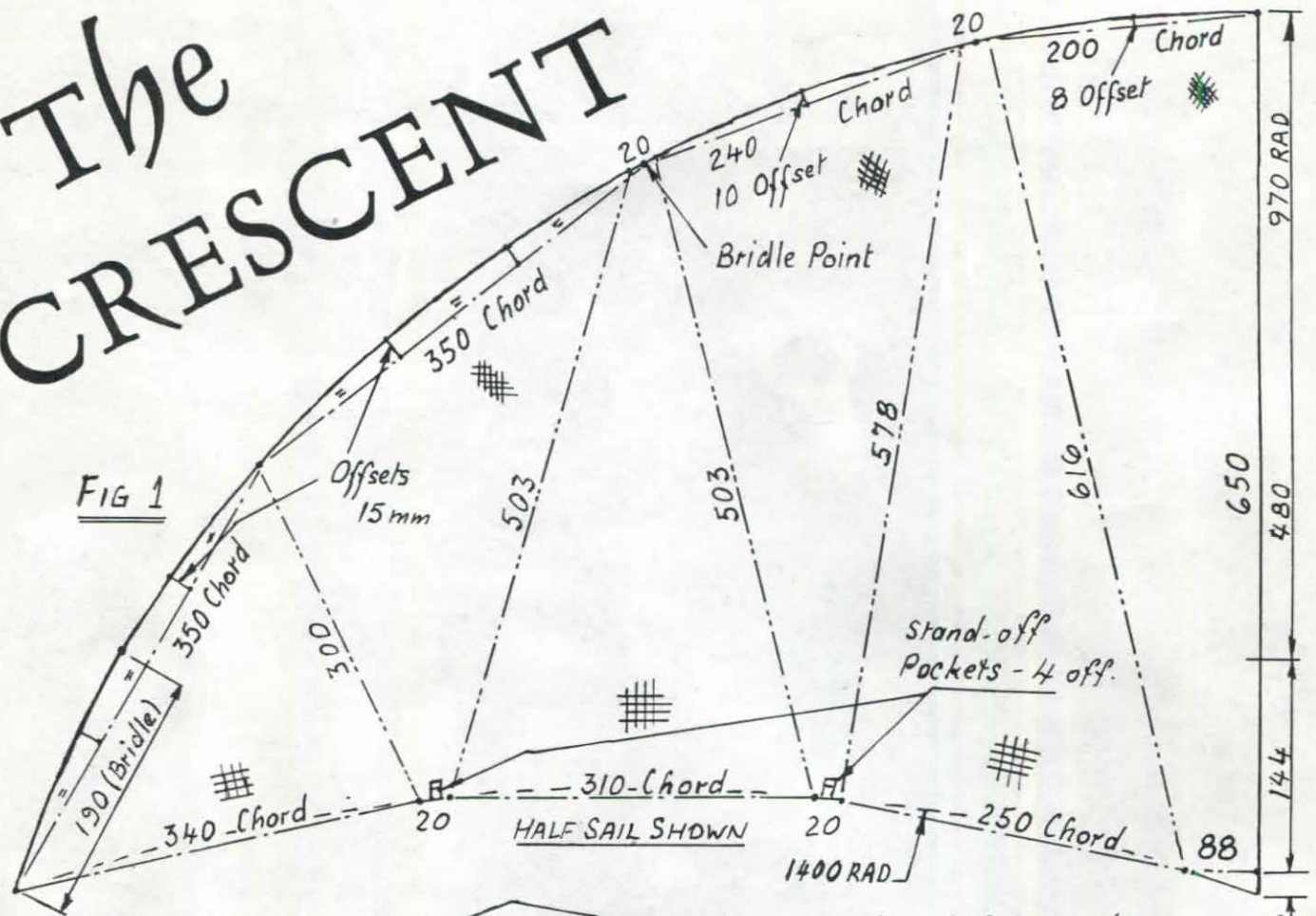
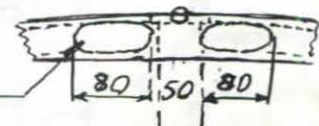


The CRESCENT



View on rear of spine showing access holes FIG 3.



- Item 3 - Rubber tube 5.5mm inside dia. x 30mm long Drilled 4mm dia. 6mm from end. 5 required.
- Item 4 - Rubber tube 5.5mm inside dia. x 25mm lg Drilled 5mm dia. 6mm from end. 4 required.
- Item 5 - Rubber tube 5.5mm inside dia. x 40mm long drilled one side only & 15mm from end. 2 required.
- Item 6 - Rubber tube 5.5 dia. x 20 long Cross drilled at 90degs. 7 from each end. 1 only required.
- Item 7 - Fiberglass rod 1.5mm dia. x 205mm long tipped each end wiyh end caps 4mm outer dia. 4 required.